

87500750 TRIDONIC LC 25W 350MA FIXC SR SNC2

PRD-70-10-39



**Features & Benefits**

- Fixed current output 350mA
- Up to 25W
- Integrated protection to guard against short-circuits
- Overload and thermal safeguards

**Key Data**

<b>Power</b>	25W
<b>IP Rating</b>	IP20
<b>Dimensions</b>	127 x 43 x 30mm
<b>Warranty</b>	5 Years (Registration Required)

**NET LED Lighting**

Buckingway Business Park, 300 Anderson Road,  
Swavesey, Cambridge, CB24 4UQ

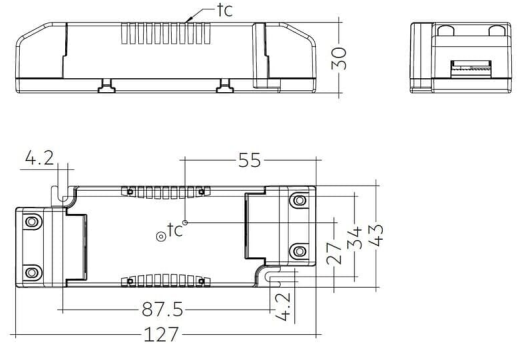
T: 01223 851505 | [sales@netled.co.uk](mailto:sales@netled.co.uk) | [www.netled.co.uk](http://www.netled.co.uk)



**ORDER BY 6PM**  
FOR NEXT DAY DELIVERY

## Technical Specifications

Input Voltage (AC)	220-240V
Dimmable	Yes
Operating Temp.	-20°C to +50°C
Lifespan LM80	<100,000 Hours
Weight	0.096Kg
Manufacturer	Tridonic
Output Current	350mA
Output Power	15.8-25W
Output Voltage	198-264V
Power Frequency	50/60Hz
Housing Colour	White
Dimming Input Type	one4all Dimming - DALI 1 & 2 and switchDIM
Dimming Range	1-100%



## Other Options

Description	
PRD-70-10-39	87500750 Tridonic LC 25W 350mA fixC SR SNC2

### NET LED Lighting

Buckingham Business Park, 300 Anderson Road,  
Swavesey, Cambridge, CB24 4UQ



**ORDER BY 6PM**  
FOR NEXT DAY DELIVERY

T: 01223 851505 | sales@netled.co.uk | www.netled.co.uk