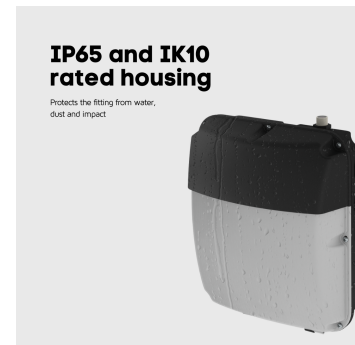


## EASTON WALLPACK TRI-COLOUR IP65 40W STANDARD

NET-51-11-41



### Features & Benefits

- Selectable 3000K, 4000K or 5500K colour temperature
- IP65 and IK10 rated housing
- Integral Photocell ensures unit is only operational from dusk to dawn
- Photocell feature can be bypassed as required
- Breather valve allows heat to escape and prevents condensation
- Push connector to reduce installation time

### Key Data

<b>Power</b>	40W
<b>Luminous Flux</b>	3000lm
<b>Colour Temperature</b>	3000K/4000K/5500K
<b>IP Rating</b>	IP65
<b>IK Rating</b>	IK08
<b>Dimensions</b>	300 x 264 x 130mm
<b>Warranty</b>	5 Years (Registration Required)

### NET LED Lighting

Buckingway Business Park, 300 Anderson Road,  
Swavesey, Cambridge, CB24 4UQ

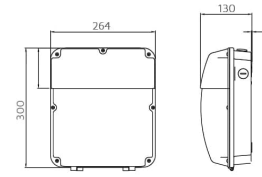
T: 01223 851505 | [sales@netled.co.uk](mailto:sales@netled.co.uk) | [www.netled.co.uk](http://www.netled.co.uk)



**ORDER BY 6PM**  
FOR NEXT DAY DELIVERY

## Technical Specifications

Input Voltage (AC)	220-240V
Power Factor	>0.95
Luminaire Efficacy	65lm/W
LED Manufacturer	Sinotron
LED Type	SMD 2835
No. of LEDs	168
Driver Manufacturer	Tridonic Advanced Series
Driver Output Voltage (DC)	39-44.8V
Total Circuit Power (W)	40W +/- 5W
Electrical Class	1
Colour Rendering	>80 CRI
Lamp Viewing Angle	120°
Dimmable	No
Operating Temp.	-15°C to +40°C
Lifespan LM80	60,000 Hours
UGR Rating	More than 22
Weight	1.45Kg
Manufacturer	Sealite Co. Ltd.
Fire Rating	V0
Housing Colour	Black
Housing Material	Aluminium
Diffuser Material	Polycarbonate



## Other Options

Description	
NET-51-11-41	Easton Wallpack Tri-Colour IP65 40W Standard
NET-51-11-42	Easton Wallpack Tri-Colour IP65 40W Emergency

### NET LED Lighting

Buckingham Business Park, 300 Anderson Road,  
Swavesey, Cambridge, CB24 4UQ



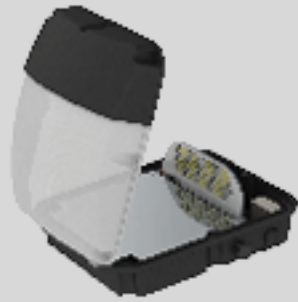
**ORDER BY 6PM**  
FOR NEXT DAY DELIVERY

T: 01223 851505 | sales@netled.co.uk | www.netled.co.uk

3K 4K 5.5K

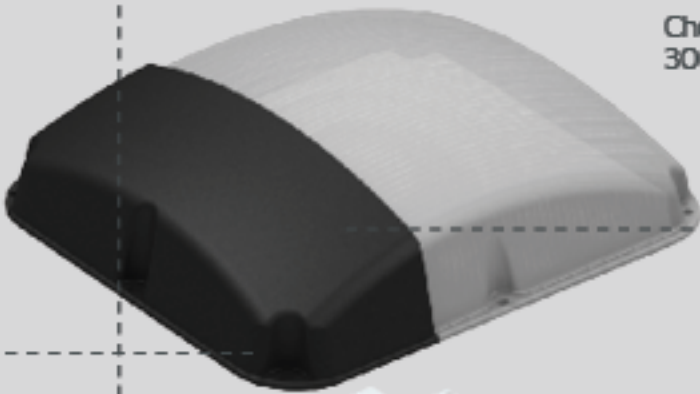
**SELECTABLE COLOUR TEMPERATURE**

Choose your colour temperature 3000K, 4000K or 5500K



**HINGED DIFFUSER**

Get easy access to internal components



**IP65 AND IK10 RATED HOUSING**

Protect the fitting from water, dust and impact



**REFLECTOR PLATE**

Directs the light down towards the ground - perfect for walkways and the side of buildings

**PUSH CONNECTOR**

Reduce installation time with easy-to-use push fit terminals



**INTEGRAL PHOTOCELL SENSOR**

Built-in photocell sensor which can be bypassed if required



**NEW**

**MANUAL OR SELF TEST EMERGENCY SELECTABLE**

Choose between manual emergency or self test emergency at the time of installation

*Emergency options only*



**BREATHER VALVE**

Prevent heat and condensation building up inside the fitting