

MANUAL/SELF TEST EMERGENCY SELECTABLE LED CONVERTER 2.5W

NET-50-12-10



Features & Benefits

- Choose between Self Test Emergency and manual 3H Emergency operation
- Compatible with LED Tubes

Key Data

| | |
|-------------------|-----------------|
| Power | 2.5W |
| Dimensions | 164 x 30 x 22mm |
| Warranty | 3 Years |

NET LED Lighting

Buckingway Business Park, 300 Anderson Road,
Swavesey, Cambridge, CB24 4UQ

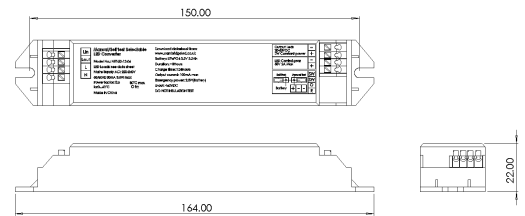
T: 01223 851505 | sales@netled.co.uk | www.netled.co.uk



ORDER BY 6PM
FOR NEXT DAY DELIVERY

Technical Specifications

| | |
|----------------------------|---------------------|
| Input Voltage (AC) | 220-240V |
| Power Factor | 0.5 |
| Driver Output Voltage (DC) | 50-300V |
| Total Circuit Power (w) | 2.5W |
| Operating Temp. | 0°C to +60°C |
| Manufacturer | Cambridge LED |
| AC Current | 220-240V |
| Hours Maintained | >3H |
| Output Current | 40mA |
| Output Power | 2.5W |
| Output Voltage | 50-300V |
| Power Frequency | 50/60Hz |
| Recharge Period | >24H |
| Self Test | Selectable |
| Housing Colour | White |
| Housing Material | Polycarbonate |
| Battery Pack | LiFePO4 3.2V 3.2mAh |
| Battery Warranty | 1 Year |
| Charge Time | >24H |
| Emergency Operation | 3H or Self Test |



Other Options

| Description | |
|--------------|--|
| NET-19-33-17 | Liteplan DALI Emergency Kit 5W |
| NET-61-33-01 | Foxlux Self Test Emergency Kit 5W |
| NET-50-12-10 | Manual/Self Test Emergency Selectable LED Converter 2.5W |
| NET-61-33-05 | DALI Emergency Kit 3W/6W |

NET LED Lighting

Buckingham Business Park, 300 Anderson Road,
Swavesey, Cambridge, CB24 4UQ



ORDER BY 6PM
FOR NEXT DAY DELIVERY