

87500863 TRIDONIC LC 21W 500MA FIXC SR ADV2 WITH DC CONNECTOR

NET-45-43-11



Key Data

Power	21W
Dimensions	100 x 43 x 22.5mm

NET LED Lighting

Buckingway Business Park, 300 Anderson Road,
Swavesey, Cambridge, CB24 4UQ

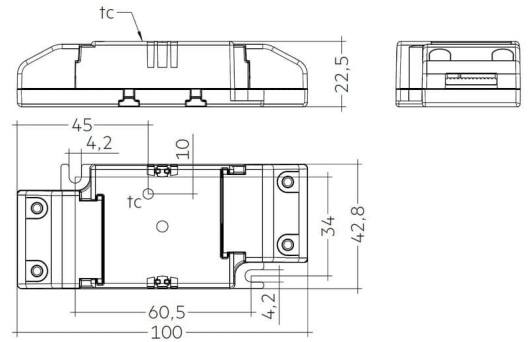
T: 01223 851505 | sales@netled.co.uk | www.netled.co.uk



ORDER BY 6PM
FOR NEXT DAY DELIVERY

Technical Specifications

Input Voltage (AC)	220-240V
Operating Temp.	-25°C to +40°C
Manufacturer	Tridonic
Housing Colour	White



Other Options

Description	
NET-45-43-09	87500747 Tridonic LC 15W 350mA fixC SR SNC2 with DC Connector
NET-45-43-11	87500863 Tridonic LC 21W 500mA fixC SR ADV2 with DC Connector

NET LED Lighting

Buckingham Business Park, 300 Anderson Road,
Swavesey, Cambridge, CB24 4UQ

T: 01223 851505 | sales@netled.co.uk | www.netled.co.uk



ORDER BY 6PM
FOR NEXT DAY DELIVERY