

REPLACEMENT TRIDONIC DRIVER FOR 20W NON-DIMMABLE KINGSTON PANEL

NET-45-43-01



NET LED Lighting

Buckingway Business Park, 300 Anderson Road,
Swavesey, Cambridge, CB24 4UQ

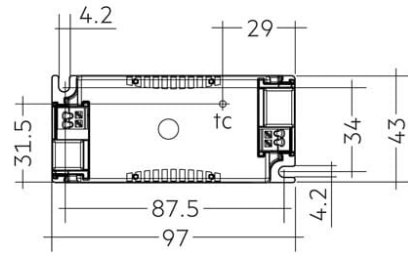
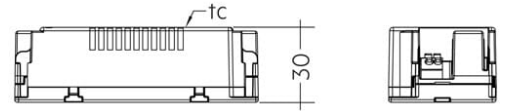
T: 01223 851505 | sales@netled.co.uk | www.netled.co.uk



ORDER BY 6PM
FOR NEXT DAY DELIVERY

Technical Specifications

| | |
|--------------------|---------------|
| Input Voltage (AC) | 220-240V |
| Manufacturer | Tridonic |
| Housing Material | Polycarbonate |



Other Options

| Description | |
|--------------|--------------------------------------------------------------------------|
| NET-45-43-01 | Replacement Tridonic Driver for 20W Non-Dimmable Kingston Panel |
| NET-45-43-02 | Replacement Tridonic Driver for 30W Non-Dimmable Kingston/Hinxton Panels |
| NET-45-43-03 | Replacement Tridonic Driver for 50W Non-Dimmable Kingston/Hinxton Panels |

NET LED Lighting

Buckingham Business Park, 300 Anderson Road,
Swavesey, Cambridge, CB24 4UQ



ORDER BY 6PM
FOR NEXT DAY DELIVERY

T: 01223 851505 | sales@netled.co.uk | www.netled.co.uk