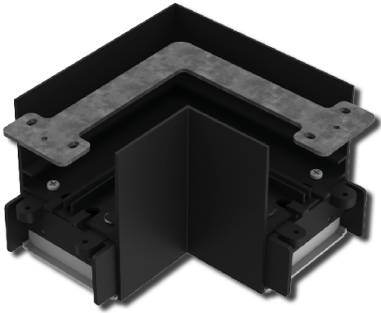


L SHAPE NON-ILLUMINATED CORNER CONNECTOR FOR MARCH LINEAR LIGHT BARS

NET-43-11-42



Features & Benefits

- Allows for a smooth and precise 90° connection between two linears, ideal for corner installations
- Maintains a clean, continuous lighting system
- Quick and simple installation
- Helps maintain a polished, professional look by providing a neat, unobtrusive corner connection for continuous lighting runs

Key Data

Dimensions 96 x 96 x 75mm

NET LED Lighting

Buckingway Business Park, 300 Anderson Road,
Swavesey, Cambridge, CB24 4UQ

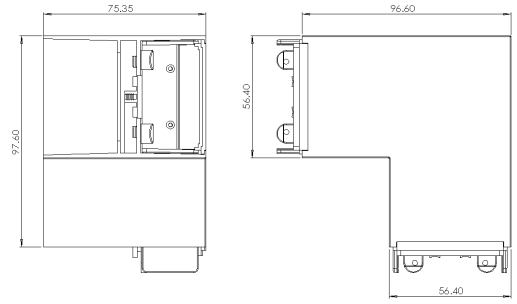
T: 01223 851505 | sales@netled.co.uk | www.netled.co.uk



ORDER BY 6PM
FOR NEXT DAY DELIVERY

Technical Specifications

Weight 0.285Kg
Manufacturer Sochii Lighting



Other Options

| Description | |
|--------------|--|
| NET-43-11-42 | L Shape Non-Illuminated Corner Connector for March Linear Light Bars |

NET LED Lighting

Buckingway Business Park, 300 Anderson Road,
Swavesey, Cambridge, CB24 4UQ

T: 01223 851505 | sales@netled.co.uk | www.netled.co.uk



ORDER BY 6PM
FOR NEXT DAY DELIVERY