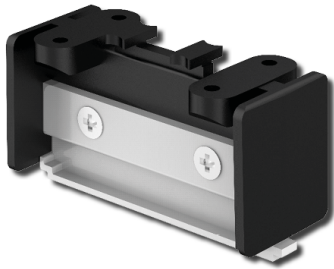


STRAIGHT LINK CONNECTOR FOR MARCH LINEAR LIGHT BARS

NET-43-11-40



Features & Benefits

- Provides a smooth, gap-free link between two linears, ensuring continuous and uniform lighting
- Quick and hassle-free installation
- Ideal for creating sleek, professional lighting setups
- Helps create clean, streamlined lighting layouts

Key Data

Dimensions 54 x 22 x 32mm

NET LED Lighting

Buckingham Business Park, 300 Anderson Road,
Swavesey, Cambridge, CB24 4UQ

T: 01223 851505 | sales@netled.co.uk | www.netled.co.uk

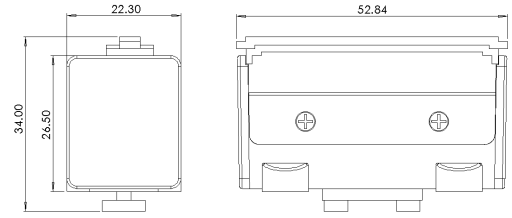


ORDER BY 6PM
FOR NEXT DAY DELIVERY

Technical Specifications

Manufacturer

Sochii Lighting



Other Options

Description	
NET-43-11-40	Straight Link Connector for March Linear Light Bars

NET LED Lighting

Buckingway Business Park, 300 Anderson Road,
Swavesey, Cambridge, CB24 4UQ

T: 01223 851505 | sales@netled.co.uk | www.netled.co.uk



ORDER BY 6PM
FOR NEXT DAY DELIVERY