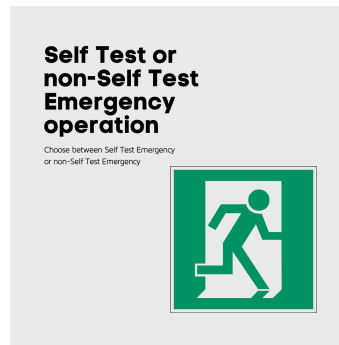
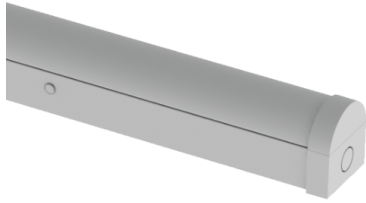


## FOXTON BATTEN TRI-COLOUR 1500MM (5FT) 30W/50W STEP DIMMING

NET-41-11-88



### Features & Benefits

- Self Test Emergency or non-Self Test Emergency
- Integral Microwave and Daylight Sensor ensures the fitting only comes on when insufficient light and movement are detected
- STEP Dimming function - 0, 10 or 30%
- Selectable colour temperature 3000K, 4000K or 5700K
- Rear or end cable entry
- Push connector for quick and easy installation

### Key Data

<b>Power</b>	30W/50W
<b>Luminous Flux</b>	3900lm/6500lm
<b>Colour Temperature</b>	3000K/4000K/5700K
<b>IP Rating</b>	IP20
<b>IK Rating</b>	IK04
<b>Dimensions</b>	1520 x 63 x 73mm
<b>Warranty</b>	5 Years (Registration Required)

### Compatible Accessories

NET-46-16-04	Universal LED NCF / Batten Suspension Kit
--------------	---

#### NET LED Lighting

Buckingham Business Park, 300 Anderson Road,  
Swavesey, Cambridge, CB24 4UQ

T: 01223 851505 | sales@netled.co.uk | www.netled.co.uk

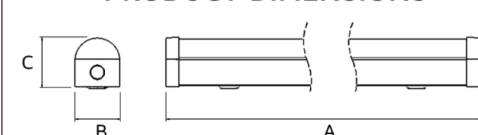


**ORDER BY 6PM**  
FOR NEXT DAY DELIVERY

## Technical Specifications

Input Voltage (AC)	220-240V
Power Factor	>0.90
Luminaire Efficacy	130lm/W
LED Manufacturer	Jingrui
LED Type	SMD 2835
No. of LEDs	264
Driver Manufacturer	Merrytek
Driver Output Voltage (DC)	90-175V
Total Circuit Power (W)	30W/50W
Electrical Class	1
Colour Rendering	>80 CRI
Lamp Viewing Angle	120°
Dimmable	Yes
Flicker-Free	Yes
Operating Temp.	0°C to +45°C
Lifespan LM80	50,000 Hours
UGR Rating	More than 22
Weight	1.775Kg
Manufacturer	Senselight
Fire Rating	V2
Hours Maintained	3H
Lux Levels	30lux/50lux/100lux or Disabled
Max. Detection Distance	2.5m
Self Test	Yes
Housing Colour	White
Housing Material	Steel
Battery Pack	LiFePO4
Diffuser Material	Polycarbonate
Dimming Input Type	Step Dimming
Duration	5s-30min
Emergency Kit	3 Year Warranty
Emergency Operation	>3H
Sensor Manufacturer	Merrytek
Sensor IP Rating	IP20
Standby Dimming Level	0%, 10% or 30%

**PRODUCT DIMENSIONS**



Size (ft)	A	B	C
2	600	63	73
4	1200	63	73
5	1500	63	73
6	1800	63	73

All units are in mm

## Other Options

Description	
NET-41-11-87	Foxtton Batten Tri-Colour 1500mm (5ft) 30W/50W Step Dimming Microwave Sensor
NET-41-11-88	Foxtton Batten Tri-Colour 1500mm (5ft) 30W/50W Step Dimming Microwave Sensor Emergency


## NET LED Lighting

Buckingham Business Park, 300 Anderson Road,  
Swavesey, Cambridge, CB24 4UQ



**ORDER BY 6PM**  
FOR NEXT DAY DELIVERY

T: 01223 851505 | sales@netled.co.uk | www.netled.co.uk



Comes with  
Integral 2-In-1  
Microwave and  
Daylight sensor

## Step Dimming Tri-Colour LED Battens

Integral Microwave **and** Daylight Sensor ensures the fitting only comes on when insufficient light and movement are detected.

Its 0, 10 or 30% Standby Mode provides a lower lighting level when full brightness isn't necessary, providing visibility and safety whilst minimising energy consumption.

Part Number	Description	Dimensions	Power	Lumens	Colour Temp.
NET-41-11-87	Step Dimming Microwave Sensor	1520 x 63 x 73mm (5ft)	30W/50W	3900lm/6500lm	3000K/4000K/5700K
NET-41-11-88	Step Dimming Microwave Sensor Emergency				