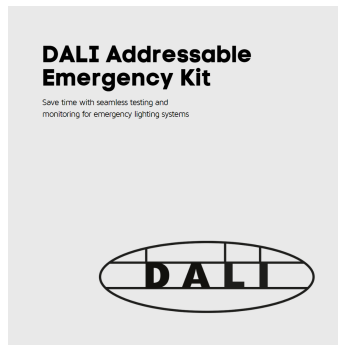
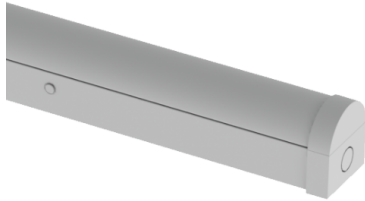


FOXTON BATTEN TRI-COLOUR 1500MM (5FT) 50W DIMMABLE DALI EMERGENCY

NET-41-11-82



Features & Benefits

- DALI Addressable Emergency Kit
- Tridonic one4all Dimming - DALI 1 & 2 and switchDIM (Push)
- Selectable colour temperature 3000K, 4000K or 5700K
- Rear or end cable entry
- Tridonic driver as standard
- Push connector for quick and easy installation

Key Data

Power	50W
Luminous Flux	6500lm
Colour Temperature	3000K/4000K/5700K
IP Rating	IP20
IK Rating	IK04
Dimensions	1520 x 63 x 73mm
Warranty	5 Years (Registration Required)

Compatible Accessories

NET-42-43-38	Merrytek Microwave Sensor IP65 20mm Knock Out
NET-46-16-04	Universal LED NCF / Batten Suspension Kit
NET-42-43-24	DALI Dimmer Switch
NET-51-11-01	PIR Sensor (External) for Battens and NCFs
NET-51-11-03	On/Off Step Dimming Sensor (External) for Battens and NCFs

NET LED Lighting

Buckingham Business Park, 300 Anderson Road,
Swavesey, Cambridge, CB24 4UQ

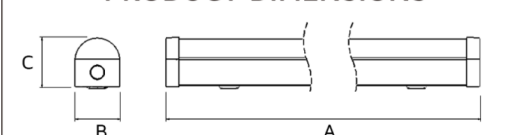
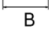
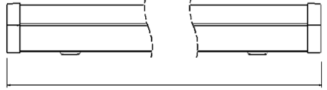
T: 01223 851505 | sales@netled.co.uk | www.netled.co.uk



ORDER BY 6PM
FOR NEXT DAY DELIVERY

Technical Specifications

Input Voltage (AC)	220-240V
Power Factor	>0.90
Luminaire Efficacy	130lm/W
LED Manufacturer	Jingrui
LED Type	SMD 2835
No. of LEDs	480
Driver Manufacturer	Tridonic Premium Series
Driver Output Voltage (DC)	20-54V
Total Circuit Power (W)	50W
Electrical Class	1
Colour Rendering	>80 CRI
Lamp Viewing Angle	120°
Dimmable	No
Flicker-Free	Yes
Operating Temp.	0°C to +45°C
Lifespan LM80	50,000 Hours
UGR Rating	More than 22
Manufacturer	Senselight
Fire Rating	V2
Hours Maintained	3H
Self Test	No
Housing Colour	White
Housing Material	Steel
Battery Pack	LiFePO4 3.2V 4.5Ah
Diffuser Material	Polycarbonate
Dimming Input Type	Tridonic one4all Dimming - DALI 1 & 2 and switchDIM (Push)
Emergency Kit	3 Year Warranty
Emergency Operation	>3H
Emergency Pack	DALI Addressable

PRODUCT DIMENSIONS			
			
Size (ft)	A	B	C
2	600	63	73
4	1200	63	73
5	1500	63	73
6	1800	63	73

All units are in mm

Other Options

Description	
NET-41-11-96	Foxtton Batten Tri-Colour 1500mm (5ft) 50W Standard
NET-41-11-95	Foxtton Batten Tri-Colour 1500mm (5ft) 50W Emergency
NET-41-12-95	Foxtton Batten Tri-Colour 1500mm (5ft) 50W Self Test Emergency
NET-41-11-13	Foxtton Batten Tri-Colour 1500mm (5ft) 50W Dimmable one4all
NET-41-11-14	Foxtton Batten Tri-Colour 1500mm (5ft) 50W Dimmable Emergency
NET-41-11-82	Foxtton Batten Tri-Colour 1500mm (5ft) 50W Dimmable DALI Emergency
NET-41-11-83	Foxtton Batten Tri-Colour 1500mm (5ft) 50W PIR Sensor On/Off
NET-41-12-83	Foxtton Batten Tri-Colour 1500mm (5ft) 50W PIR Sensor On/Off Emergency
NET-41-11-84	Foxtton Batten Tri-Colour 1500mm (5ft) 50W Bluetooth
NET-41-12-84	Foxtton Batten Tri-Colour 1500mm (5ft) 50W Bluetooth Emergency

NET LED Lighting

Buckingham Business Park, 300 Anderson Road,
Swavesey, Cambridge, CB24 4UQ



ORDER BY 6PM
FOR NEXT DAY DELIVERY

T: 01223 851505 | sales@netled.co.uk | www.netled.co.uk

COMBINED DIFFUSER AND LEDS

Stop juggling multiple parts and install a diffuser that comes with built-in LEDs

FLICKER-FREE TRIDONIC DIMMABLE DRIVER

Ensure reliability, durability and performance leading to long-lasting LEDs

Dimmable options only

NEW

MANUAL OR SELF TEST EMERGENCY SELECTABLE

Choose between manual emergency or self test emergency at the time of installation

Emergency options only

REAR OR END CABLE ENTRY

Create seamless end-to-end lighting designs

WIRELESS CONTROL

Control the panel remotely via smartphone or tablet with it's Bluetooth Dimmable Driver

Bluetooth options only

SELECTABLE COLOUR TEMPERATURE

Choose your colour temperature 3000K, 4000K or 5700K

3K

4K

5.7K