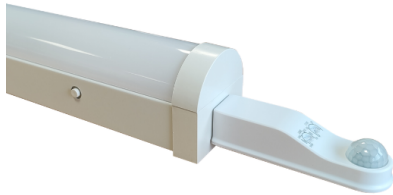


FOXTON BATTEN TRI-COLOUR 1200MM (4FT) 20W PIR SENSOR ON/OFF EMERGENCY

NET-41-11-74



Features & Benefits

- 3H Emergency function
- On/Off PIR Sensor ensures the fitting only comes on when heat signatures are detected
- Selectable colour temperature 3000K, 4000K or 5700K
- Rear or end cable entry
- Tridonic driver as standard
- Push connector for quick and easy installation

Key Data

| | |
|---------------------------|---------------------------------|
| Power | 20W |
| Luminous Flux | 2600lm |
| Colour Temperature | 3000K/4000K/5700K |
| IP Rating | IP20 |
| IK Rating | IK04 |
| Dimensions | 1240 x 100 x 85mm |
| Warranty | 5 Years (Registration Required) |

Compatible Accessories

| | |
|--------------|---|
| NET-61-33-03 | DALI Emergency Kit 3W |
| NET-46-16-04 | Universal LED NCF / Batten Suspension Kit |

NET LED Lighting

Buckingham Business Park, 300 Anderson Road,
Swavesey, Cambridge, CB24 4UQ

T: 01223 851505 | sales@netled.co.uk | www.netled.co.uk

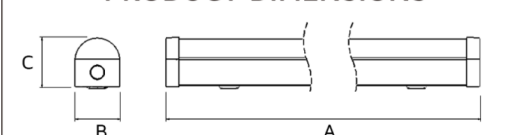


ORDER BY 6PM
FOR NEXT DAY DELIVERY

Technical Specifications

| | |
|----------------------------|------------------------------|
| Input Voltage (AC) | 220-240V |
| Power Factor | >0.90 |
| Luminaire Efficacy | 130lm/W |
| LED Manufacturer | Jingrui |
| LED Type | SMD 2835 |
| No. of LEDs | 240 |
| Driver Manufacturer | Tridonic Advanced Series |
| Driver Output Voltage (DC) | 20-54V |
| Total Circuit Power (W) | 20W |
| Electrical Class | 1 |
| Colour Rendering | >80 CRI |
| Lamp Viewing Angle | 120° |
| Dimmable | No |
| Flicker-Free | Yes |
| Lifespan LM80 | 50,000 Hours |
| UGR Rating | More than 22 |
| Manufacturer | Senselight |
| Fire Rating | V2 |
| Hours Maintained | 3H |
| Lux Levels | <3lux - 2000lux (adjustable) |
| Self Test | No |
| Housing Colour | White |
| Housing Material | Steel |
| Battery Pack | LiFePO4 |
| Detection Angle | 360° |
| Diffuser Material | Polycarbonate |
| Duration | 10s-30min |
| Emergency Kit | 3 Year Warranty |
| Emergency Operation | >3H |
| Emergency Pack | Streamer |
| Sensor Manufacturer | Sealite Co. Ltd. |
| Sensor IP Rating | IP65 |

PRODUCT DIMENSIONS



| Size (ft) | A | B | C |
|-----------|------|----|----|
| 2 | 600 | 63 | 73 |
| 4 | 1200 | 63 | 73 |
| 5 | 1500 | 63 | 73 |
| 6 | 1800 | 63 | 73 |

All units are in mm

Other Options

| Description | |
|--------------|--|
| NET-41-11-91 | Foxtton Batten Tri-Colour 1200mm (4ft) 20W Standard |
| NET-41-11-92 | Foxtton Batten Tri-Colour 1200mm (4ft) 20W Emergency |
| NET-41-12-92 | Foxtton Batten Tri-Colour 1200mm (4ft) 20W Self Test Emergency |
| NET-41-11-08 | Foxtton Batten Tri-Colour 1200mm (4ft) 20W Dimmable one4all |
| NET-41-11-09 | Foxtton Batten Tri-Colour 1200mm (4ft) 20W Dimmable Emergency |
| NET-41-11-72 | Foxtton Batten Tri-Colour 1200mm (4ft) 20W Dimmable DALI Emergency |
| NET-41-11-73 | Foxtton Batten Tri-Colour 1200mm (4ft) 20W PIR Sensor On/Off |
| NET-41-11-74 | Foxtton Batten Tri-Colour 1200mm (4ft) 20W PIR Sensor On/Off Emergency |
| NET-41-11-75 | Foxtton Batten Tri-Colour 1200mm (4ft) 20W Microwave Sensor On/Off |
| NET-41-11-76 | Foxtton Batten Tri-Colour 1200mm (4ft) 20W Microwave Sensor On/Off Emergency |

NET LED Lighting

Buckingham Business Park, 300 Anderson Road,
Swavesey, Cambridge, CB24 4UQ



ORDER BY 6PM
FOR NEXT DAY DELIVERY

T: 01223 851505 | sales@netled.co.uk | www.netled.co.uk

COMBINED DIFFUSER AND LEDS

Stop juggling multiple parts and install a diffuser that comes with built-in LEDs

FLICKER-FREE TRIDONIC DIMMABLE DRIVER

Ensure reliability, durability and performance leading to long-lasting LEDs

Dimmable options only

NEW

MANUAL OR SELF TEST EMERGENCY SELECTABLE

Choose between manual emergency or self test emergency at the time of installation

Emergency options only

REAR OR END CABLE ENTRY

Create seamless end-to-end lighting designs

WIRELESS CONTROL

Control the panel remotely via smartphone or tablet with it's Bluetooth Dimmable Driver

Bluetooth options only

SELECTABLE COLOUR TEMPERATURE

Choose your colour temperature 3000K, 4000K or 5700K

3K

4K

5.7K