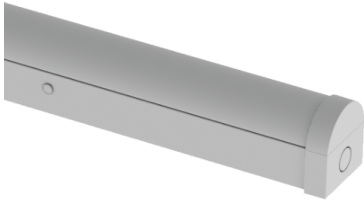


## FOXTON BATTEN TRI-COLOUR 1800MM (6FT) 35W DIMMABLE DALI EMERGENCY

NET-41-11-61



### Features & Benefits

- DALI Addressable Emergency Kit
- Tridonic one4all Dimming - DALI 1 & 2 and switchDIM (Push)
- Selectable colour temperature 3000K, 4000K or 5700K
- Rear or end cable entry
- Tridonic driver as standard
- Push connector for quick and easy installation

### Key Data

<b>Power</b>	35W
<b>Luminous Flux</b>	4550lm
<b>Colour Temperature</b>	3000K/4000K/5700K
<b>IP Rating</b>	IP20
<b>IK Rating</b>	IK04
<b>Dimensions</b>	1820 x 63 x 73mm
<b>Warranty</b>	5 Years (Registration Required)

### Compatible Accessories

NET-42-43-38	Merrytek Microwave Sensor IP65 20mm Knock Out
NET-46-16-04	Universal LED NCF / Batten Suspension Kit
NET-42-43-24	DALI Dimmer Switch
NET-51-11-01	PIR Sensor (External) for Battens and NCFs
NET-51-11-03	On/Off Step Dimming Sensor (External) for Battens and NCFs

### NET LED Lighting

Buckingham Business Park, 300 Anderson Road,  
Swavesey, Cambridge, CB24 4UQ

T: 01223 851505 | sales@netled.co.uk | www.netled.co.uk

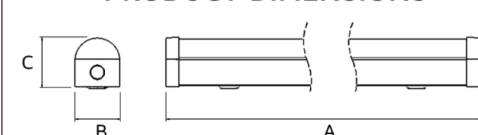


**ORDER BY 6PM**  
FOR NEXT DAY DELIVERY

## Technical Specifications

Input Voltage (AC)	220-240V
Power Factor	>0.90
Luminaire Efficacy	130lm/W
LED Manufacturer	Jingrui
LED Type	SMD 2835
No. of LEDs	352
Driver Manufacturer	Tridonic Premium Series
Driver Output Voltage (DC)	20-54V
Total Circuit Power (W)	35W
Electrical Class	1
Colour Rendering	>80 CRI
Lamp Viewing Angle	120°
Dimmable	Yes
Flicker-Free	Yes
Operating Temp.	0°C to +45°C
Lifespan LM80	50,000 Hours
UGR Rating	More than 22
Manufacturer	Senselight
Fire Rating	V2
Hours Maintained	3H
Self Test	No
Housing Colour	White
Housing Material	Steel
Battery Pack	LiFePO4 3.2V 4.5Ah
Diffuser Material	Polycarbonate
Dimming Input Type	Tridonic one4all Dimming - DALI 1 & 2 and switchDIM (Push)
Emergency Kit	3 Year Warranty
Emergency Operation	>3H
Emergency Pack	DALI Addressable

**PRODUCT DIMENSIONS**



Size (ft)	A	B	C
2	600	63	73
4	1200	63	73
5	1500	63	73
6	1800	63	73

All units are in mm

## Other Options

Description	
NET-41-11-97	Foxtton Batten Tri-Colour 1800mm (6ft) 35W Standard
NET-41-11-98	Foxtton Batten Tri-Colour 1800mm (6ft) 35W Emergency
NET-41-12-98	Foxtton Batten Tri-Colour 1800mm (6ft) 35W Self Test Emergency
NET-41-11-15	Foxtton Batten Tri-Colour 1800mm (6ft) 35W Dimmable one4all
NET-41-11-16	Foxtton Batten Tri-Colour 1800mm (6ft) 35W Dimmable Emergency
NET-41-11-61	Foxtton Batten Tri-Colour 1800mm (6ft) 35W Dimmable DALI Emergency
NET-41-11-62	Foxtton Batten Tri-Colour 1800mm (6ft) 35W PIR Sensor On/Off
NET-41-11-63	Foxtton Batten Tri-Colour 1800mm (6ft) 35W PIR Sensor On/Off Emergency
NET-41-11-64	Foxtton Batten Tri-Colour 1800mm (6ft) 35W Microwave Sensor On/Off
NET-41-11-65	Foxtton Batten Tri-Colour 1800mm (6ft) 35W Microwave Sensor On/Off Emergency

## NET LED Lighting

Buckingham Business Park, 300 Anderson Road,  
Swavesey, Cambridge, CB24 4UQ



**ORDER BY 6PM**  
FOR NEXT DAY DELIVERY

T: 01223 851505 | sales@netled.co.uk | www.netled.co.uk

### COMBINED DIFFUSER AND LEDS

Stop juggling multiple parts and install a diffuser that comes with built-in LEDs

### FLICKER-FREE TRIDONIC DIMMABLE DRIVER

Ensure reliability, durability and performance leading to long-lasting LEDs

*Dimmable options only*

**NEW**

### MANUAL OR SELF TEST EMERGENCY SELECTABLE

Choose between manual emergency or self test emergency at the time of installation

*Emergency options only*

### REAR OR END CABLE ENTRY

Create seamless end-to-end lighting designs

### WIRELESS CONTROL

Control the panel remotely via smartphone or tablet with it's Bluetooth Dimmable Driver

*Bluetooth options only*

### SELECTABLE COLOUR TEMPERATURE

Choose your colour temperature 3000K, 4000K or 5700K

3K

4K

5.7K