

**BURWELL LINEAR HIGH BAY 4000K 90W/120W/150W MICROWAVE SENSOR**

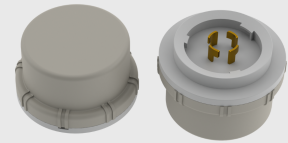
NET-23-12-08


**High power  
20W Emergency  
function**

The integral Emergency Battery ensures the fitting stays on in the event of an emergency or power failure


**External  
Microwave Sensor**

Save energy costs with a fitting that comes on when movement is detected


**Features & Benefits**

- High Power 20W Emergency function
- 0 or 25% Standby Mode
- Low glare diffuser rated UGR<16
- IP65 and IK10 rated housing
- Choose between 90W, 120W or 150W at the time of installation
- Low glare diffuser rated UGR<16

**Key Data**

<b>Power</b>	90W/120W/150W
<b>Luminous Flux</b>	15250lm/20500lm/25100lm
<b>Colour Temperature</b>	4000K
<b>IP Rating</b>	IP65
<b>IK Rating</b>	IK10
<b>Dimensions</b>	440 x 178 x 91mm
<b>Warranty</b>	5 Years (Registration Required)

**Compatible Accessories**

NET-23-12-77	Remote Control for Sensors for Orwell/Burwell High Bays
NET-15-16-20	Bracket for Power Shift High Power Emergency Kit

**NET LED Lighting**

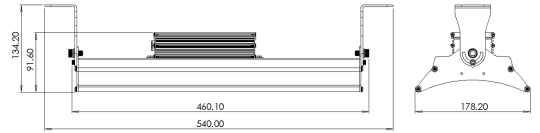
 Buckingham Business Park, 300 Anderson Road,  
 Swavesey, Cambridge, CB24 4UQ

T: 01223 851505 | sales@netled.co.uk | www.netled.co.uk


**ORDER BY 6PM**  
 FOR NEXT DAY DELIVERY

## Technical Specifications

Input Voltage (AC)	120-277V
Power Factor	0.95
Luminaire Efficacy	175lm/W
LED Manufacturer	Sanan
LED Type	SMD 2835
No. of LEDs	280
Driver Manufacturer	Tomcarline
Driver Output Voltage (DC)	180-260V DC
Total Circuit Power (W)	90W/120W/150W
Electrical Class	1
Colour Rendering	80Ra
Lamp Viewing Angle	90°
Dimmable	No
Operating Temp.	0°C to +45°C
Lifespan LM80	50,000 Hours
UGR Rating	Less than 16
Weight	4.4Kg
Manufacturer	FYTLED Co. Ltd.
Fire Rating	V0
Hours Maintained	3H
Luminous Flux Factor	9%/6.7%/5.3%
Self Test	Selectable
Housing Colour	Grey
Housing Material	Aluminium
Battery Pack	LiFePO4
Battery Warranty	3 Years Warranty
Charge Time	24H
Diffuser Material	PC
Emergency Kit	3 Year Warranty
Emergency Operation	>3H
Emergency Pack	Streamer
Sensor IP Rating	IP65
Standby Dimming Level	0% or 25%



## Other Options

Description	
NET-23-12-02	Burwell Linear High Bay 4000K 90W/120W/150W Standard
NET-23-12-04	Burwell Linear High Bay 4000K 90W/120W/150W Emergency/Self Test
NET-23-12-06	Burwell Linear High Bay 4000K 90W/120W/150W Microwave Sensor
NET-23-12-08	Burwell Linear High Bay 4000K 90W/120W/150W Microwave Sensor Emergency/Self Test

## NET LED Lighting

Buckingham Business Park, 300 Anderson Road,  
Swavesey, Cambridge, CB24 4UQ



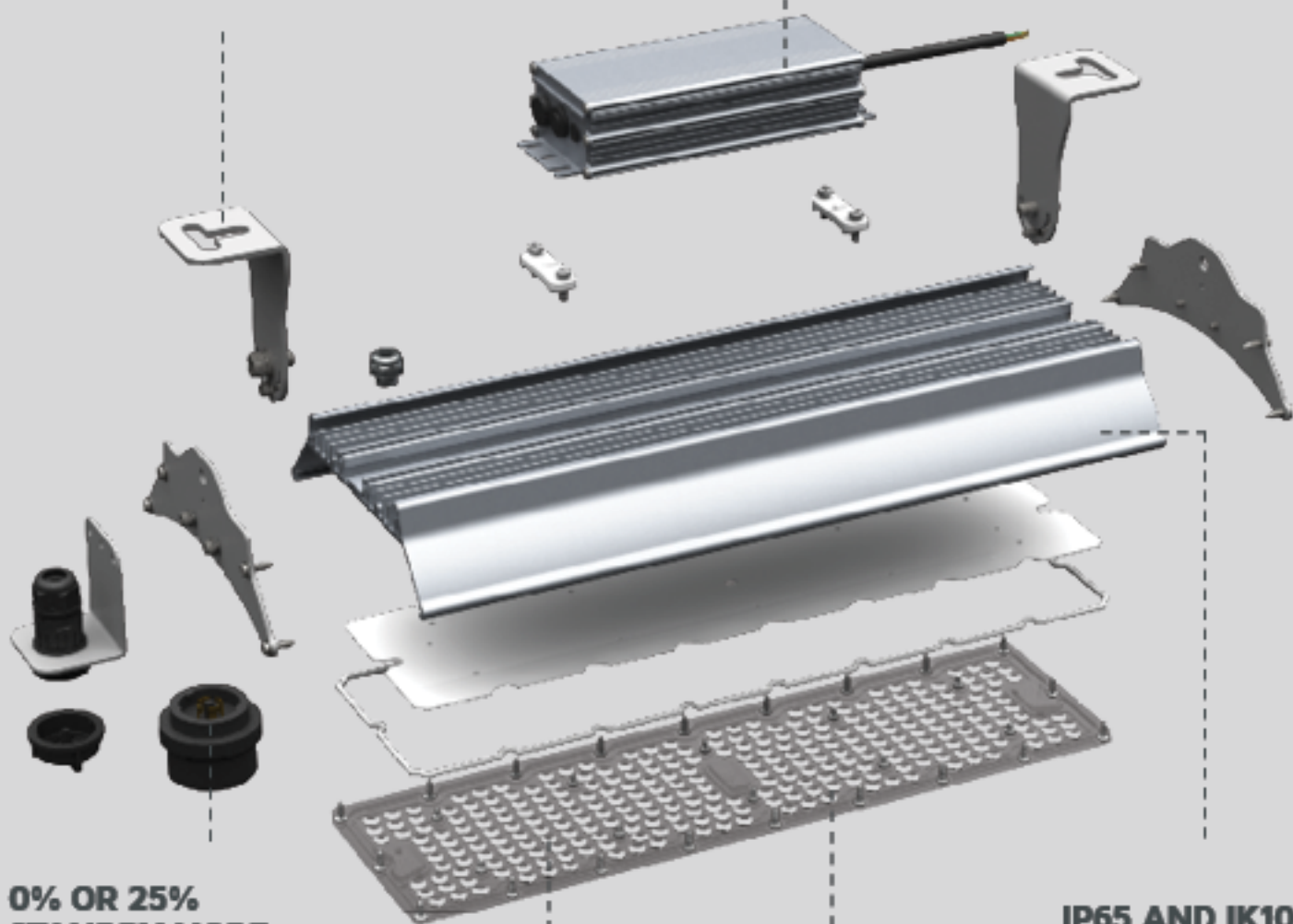
**ORDER BY 6PM**  
FOR NEXT DAY DELIVERY

## SURFACE MOUNT BRACKETS AND 1M SUSPENSION KIT INCLUDED

Install the high bay in a variety of settings

## MULTI-WATTAGE DRIVER

Choose between 90W, 120W or 150W at the time of installation



## 0% OR 25% STANDBY MODE

Reduce unnecessary energy consumption by avoiding lighting in areas that don't need it

*Microwave Sensor options only*

## 4000K COLOUR TEMPERATURE

Bright and crisp light best used for industrial applications or sports halls

## LOW GLARE DIFFUSER

Reduce glare and improve eye comfort in sports halls and warehouses

## IP65 AND IK10 RATED HOUSING

Protect your fitting from moisture, dust and impact

4K