

Safety Information

>All electrical work must be undertaken by a qualified contractor to ensure compliance with latest edition BS7671 and IEE/IET wiring regulations.

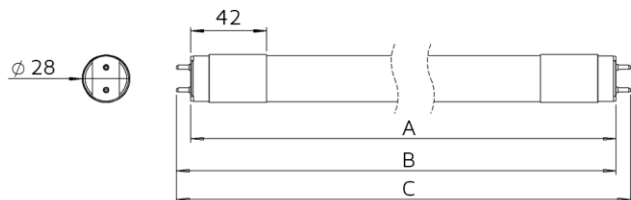
> Before installing an LED T8 Tube or doing any maintenance, ensure power supply is turned off at the circuit breaker or fuse box.

> This product is designed for permanent connection to fixed wiring; the circuit should be protected with the appropriate MCB or fuse.

Environment

>Please DO NOT dispose of electrical items or packaging as unsorted waste. Use the recycling facilities provided by your local authorities.

PRODUCT DIMENSIONS



All dimensions are in mm	A	B	C
NET-55-02-01 (2ft)	588	596	604
NET-55-02-02 (3ft)	894	901	908
NET-55-02-03 (4ft)	1198	1206	1213
NET-55-02-04 (5ft)	1498	1506	1514
NET-55-02-05 (6ft)	1764	1771	1778
NET-55-02-07 (5ft)	1498	1506	1514
NET-55-02-09 (6ft)	1764	1771	1778

Important Warranty Information

The LED T8 Tube has a 3 year warranty, which can be extended free of charge to 5 years by registering online via the website address below. The registrant must provide the product part number and date of manufacture, which can be found on the label attached to the luminaire housing.



Certificate No. FS 590684



Certificate No. EMS 590685

NET LED Lighting
Buckway Business Park
300 Anderson Road
Cambridge
CB24 4UQ
sales@netled.co.uk
www.netled.co.uk

Technical Helpline: 01223 851505
Email: support@netled.co.uk

www.netled.co.uk/downloads

Distributed by



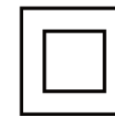
T8 LED TUBE INSTALLATION GUIDE

Part Number	Description
NET-55-02-01	2ft T8 Tube (5500K)
NET-55-02-02	3ft T8 Tube (5500K)
NET-55-02-03	4ft T8 Tube (5500K)
NET-55-02-11	4ft T8 Tube (3000K)
NET-55-02-04	5ft T8 Tube (5500K)
NET-55-02-13	5ft T8 Tube (3000K)
NET-55-02-05	6ft T8 Tube (5500K)
NET-55-02-15	6ft T8 Tube (3000K)
NET-55-02-07	5ft T8 Tube (4000K)
NET-55-02-09	6ft T8 Tube (4000K)

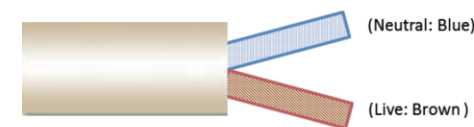
SUPPLY/EARTH CLASS

100-240V AC 50/60 Hz

Fig.1 Mains Input Termination



Class II



Installation procedure: Carefully read the installation instructions and ensure the mains supply is isolated before installation. Please follow the safety information overleaf before carrying out any installation. Please retain this leaflet for future reference.

For a light fitting with an electronic ballast:

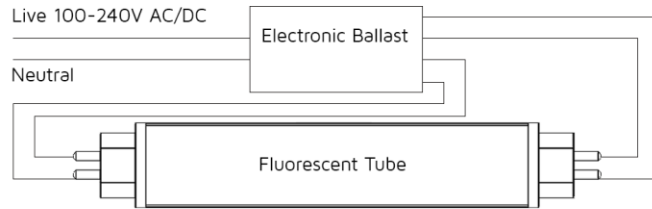


Non-replaceable light source

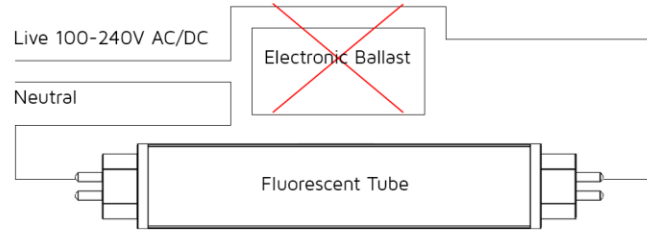


Non replaceable control gear

Step 1: Turn off the power supply and locate the electronic ballast in the fitting.

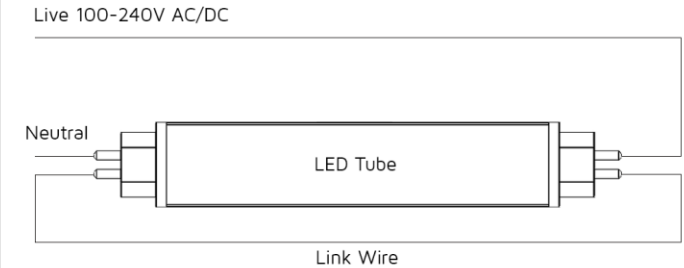


Step 2: Bypass/remove the electronic ballast along with any additional control gear or power factor correction capacitors as shown in the illustration below.

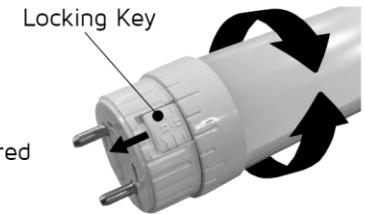


Note: A qualified electrician is required to remove/bypass the ballast from the fitting.

Step 3: Finally, to complete the circuit, add a link wire as shown in the illustration below. Install the LED tube and switch on the power supply. Our LED tubes can be installed in any orientation.



The T8 Tube endcaps can be rotated by sliding the locking key sideways, then rotate the tube to the desired angle.



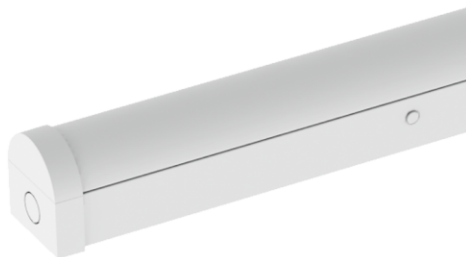
Note: All our tubes incorporate an internal fuse which provides an added layer of protection for the LED tube and the driver.

Optional additional products: A number of additional compatible products are available. To view our full range, please visit www.netled.co.uk

Have you considered a complete luminaire?

Foxton Battens

We supply LED battens which are well-suited for use in offices, corridors, receptions, schools and hospitals.



Hilton Non-Corrosive Luminaire

We supply IP65-rated (weather and dustproof) luminaires. These can be supplied with stainless steel retaining clips (sold separately). Designed for use in industrial, storage and outdoor environments.



3 Hour Emergency Kits

We supply 3 Hour Emergency Kits for our T8 LED Tubes. Available in Standard and DALI versions.

