

Safety Instructions

>All electrical work must be undertaken by a qualified contractor to ensure compliance with latest edition BS 7671 and IEE/IET wiring regulations.

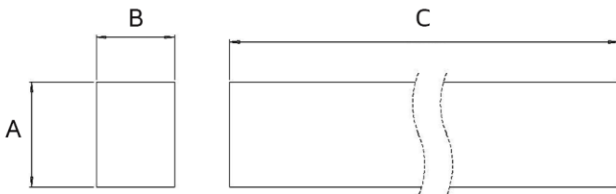
>Before installing a LED Linear or doing any maintenance, ensure power supply is turned off at the circuit breaker or fuse box.

>This product is designed for permanent connection to fixed wiring; the circuit should be protected with the appropriate MCB or fuse.

Environment

>Please DO NOT dispose of electrical items or packaging as unsorted waste, use the recycling facilities provided by your local authorities.

PRODUCT DIMENSIONS



Size (ft)	A	B	C
4	75	56	1204

All units are in mm

Important Warranty Information

The LED Linear has a 3 year warranty, which can be extended free of charge to 5 years by registering online via the website address below. The registrant must provide the product part number and date of manufacture, which can be found on the label attached to the luminaire housing.



Certificate No. FS 571788



Certificate No. EMS 571787

NET LED Limited
Buckingway Business Park
300 Anderson Road
Cambridge
CB24 4UQ UK
sales@netled.co.uk
www.netled.co.uk

Technical Helpline: 01223 851505
Email: support@netled.co.uk

www.netled.co.uk/downloads

Distributed by



LED BATTEN INSTALLATION GUIDE

LED BATTEN NET-43-11-44

KEY DATA

Light Source:	LED	
Length	4ft	
Length	1200mm	
Power	36W	
Luminous Flux(3000K)	3950lm	
Luminous Flux(4000K)	5200lm	
Luminous Flux(5000K)	4750lm	
Luminous Efficacy	105lm/W	
Colour Temperature	3000/4000/5700K	
Colour Rendering	>80 CRI	
Housing Material	Aluminium	
Diffuser Material	Polycarbonate	
IP Rating	IP40	
Manufacturer	Sochii Lighting	

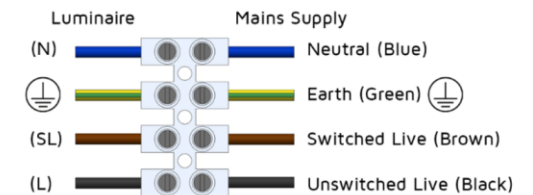
SUPPLY/EARTH CLASS

220-240V AC 50/60 Hz



Class I

Fig.1 Mains Input Termination



Installation procedure: Carefully read the installation instructions and ensure the mains supply is isolated before installation. Please read the safety information overleaf before carrying out any installation. Please retain the leaflet for future reference.

Installation Instructions



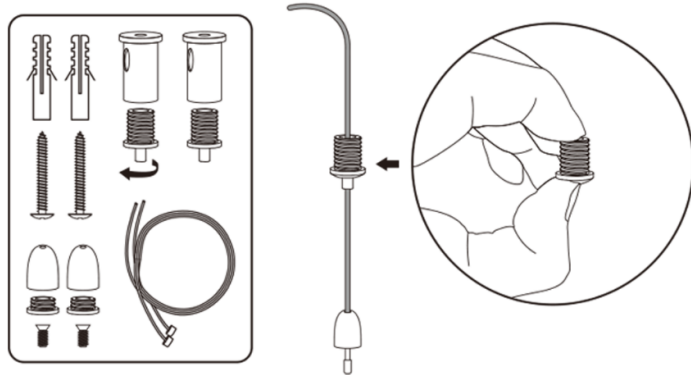
Non-replaceable light source



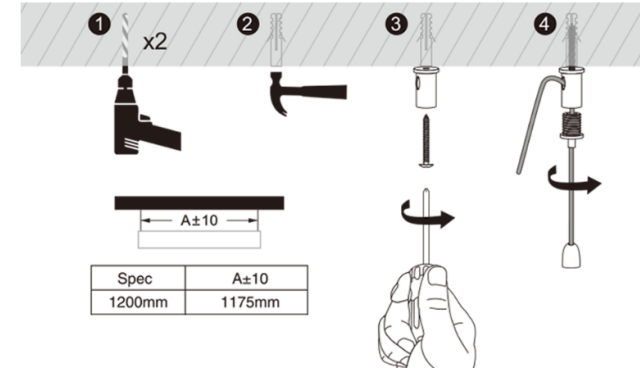
Replaceable control gear by professional

Suspension mounted installation

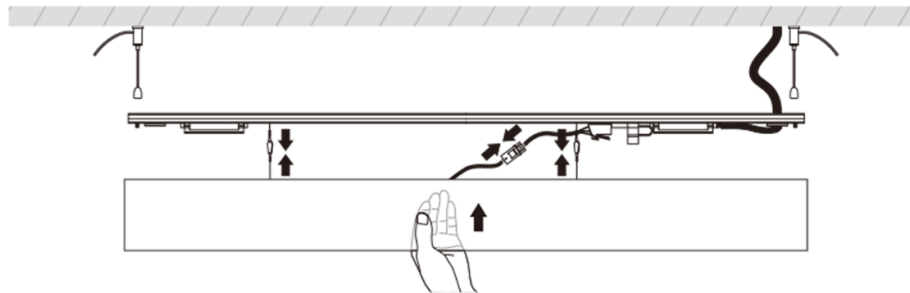
Step 1: The Linear can be suspended using the kit shown below. Ensure all components are included in the kit.



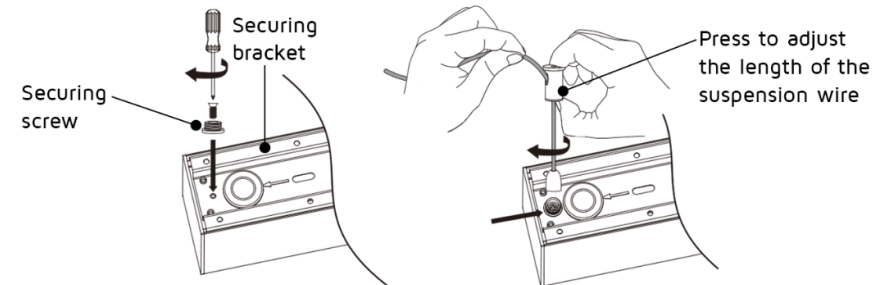
Step 2: Drill 2x fixing holes in accordance to the spec table below (1). Fit Rawl plugs to the fixing holes (2) and secure suspension kit anchor bracket with securing screws (3). Insert the suspension cable and fasten the locking screw on the anchor bracket (4).



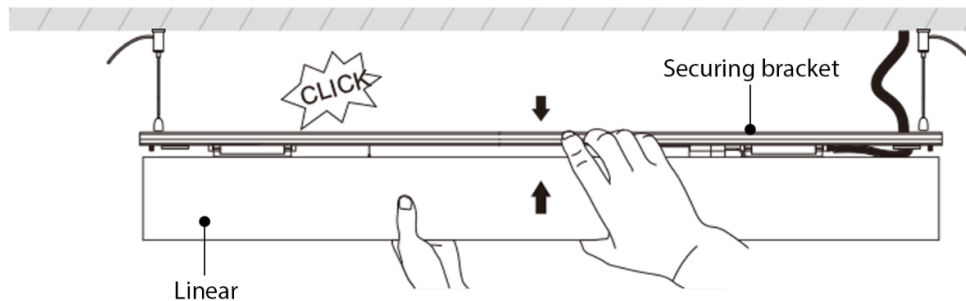
Step 3: Re-connect the LED connector and safety clips to attach the Linear from the securing bracket.



Step 4: Attach the suspension kit securing screw to the securing bracket. Attach the suspension wire to the securing screw.



Step 5: Re-attach the safety clips and the LED connector. Attach Linear to securing bracket. Listen for the 'click' from the release clips to ensure it has attached correctly.



Step 6: Trim the excess suspension wire to the required length.

