

### Safety Information

>All electrical work must be undertaken by a qualified contractor to ensure compliance with latest edition BS7671 and IEE/IET wiring regulations.

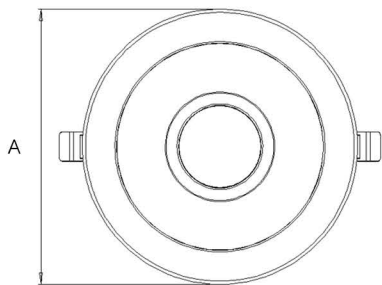
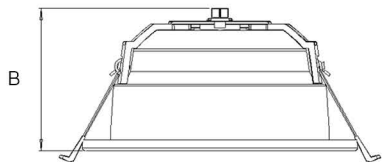
> Before installing the LED Downlight or doing any maintenance, ensure power supply is turned off at the circuit breaker or fuse box.

> This product is designed for permanent connection to fixed wiring; the circuit should be protected with the appropriate MCB or fuse.

### Environment

>Please DO NOT dispose of electrical items or packaging as unsorted waste. Use the recycling facilities provided by your local authorities.

### PRODUCT DIMENSIONS



Size(Inch)	A	B
6	170mm	86mm
8	223mm	106mm

### Important Warranty Information

The LED Downlight has a 3 year warranty, which can be extended free of charge to 5 years by registering online via the website address below. The registrant must provide the product part number and date of manufacture, which can be found on the label attached to the luminaire housing.



Certificate No. FS 590684



Certificate No. EMS 590685

NET LED Lighting  
Buckwing Business Park  
300 Anderson Road  
Cambridge  
CB24 4UQ  
sales@netled.co.uk  
www.netled.co.uk

Technical Helpline: 01223 851505  
Email: support@netled.co.uk

www.netled.co.uk/downloads

Distributed by



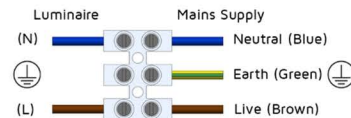
### KINGSTON LED DOWNLIGHT INSTALLATION GUIDE

Part Number	Description
NET-60-05-06	6" Standard
NET-60-05-07	6" Emergency - Maintained/Self Test
NET-60-05-08	6" Dimmable One4All
NET-60-05-09	6" Dimmable - Maintained/Self Test
NET-60-05-10	6" Dimmable Dali Emergency
NET-60-05-26	8" Standard
NET-60-05-27	8" Emergency - Maintained/Self Test
NET-60-05-28	8" Dimmable One4All
NET-60-05-29	8" Dimmable - Maintained/Self Test
NET-60-05-30	8" Dimmable Dali Emergency

### SUPPLY/EARTH CLASS

#### Driver

220-240V AC 50/60 Hz  
Fig.1 Mains Input Termination



Class II



**Installation procedure:** Carefully read the instructions and ensure the mains supply is isolated before installation. Please follow the safety information overleaf before carrying out any installation. When installing, leave a space of at least 1.2m between the LED Downlight and any heating source/air conditioning unit. Please retain this leaflet for future reference.

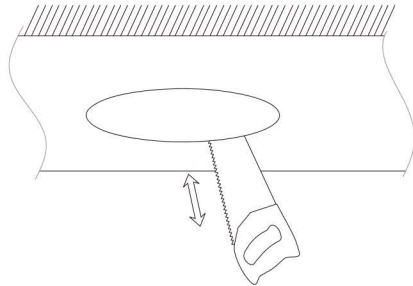
**LED Downlight Installation:**



 Replaceable light source by professional
 

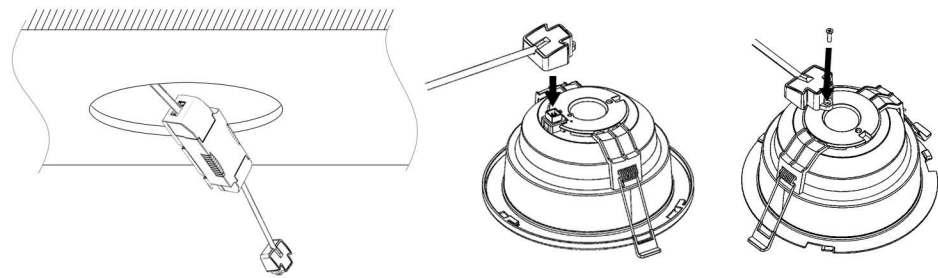
 Replaceable control gear by professional

**Step 1:** Isolate mains power supply before starting any installation. Cut out a mounting hole in the ceiling as per dimensions in the table below.

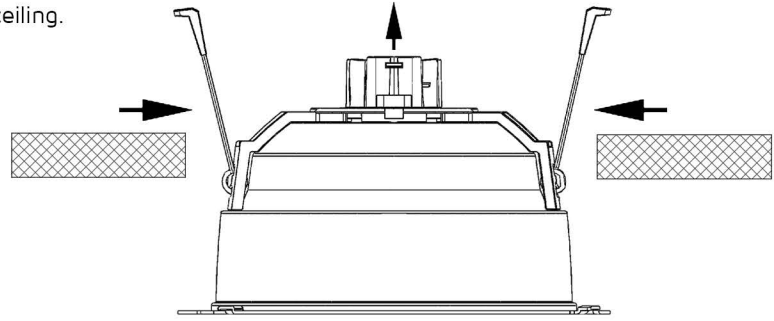


Downlight	Cut-out
6 inch	Ø145-158mm
8 inch	Ø190-210mm

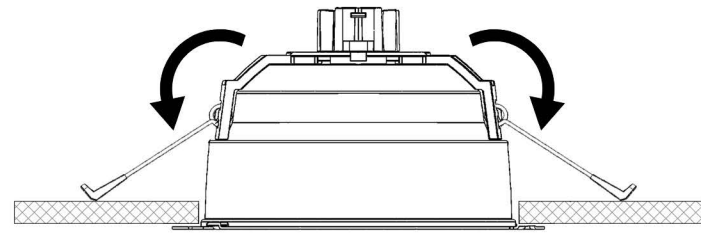
**Step 2:** Wire the LED driver to the mains supply junction box. Connect the Downlight and Driver using the inter-locking connector. Insert the connector securing screw.



**Step 3:** Press clasping springs back and push downlight body into the aperture until it's fixed in the ceiling.



**Step 4:** Switch on the mains supply to test the Downlight for correct operation.



**Optional additional products:** A number of additional compatible products are available.

**Other products from NET LED Lighting:** Full range available at [www.netled.co.uk](http://www.netled.co.uk).

**3 Hour emergency Kits**

LED Downlights are compatible with our 3 Hour Emergency Kits. Units maintain compatible Downlights

Emergency kits available for the 6" & 8" Downlights



Full specifications are available on request or at [www.netled.co.uk](http://www.netled.co.uk)

NET-50-12-08

**Dimming accessories**

We can supply DALI and 1-10V dimming accessories.

Dimmable drivers available for the 6" & 8" Downlights.

Full specifications are available on request or at [www.netled.co.uk](http://www.netled.co.uk)



For wiring diagram, please view the QR code above.